

### Features

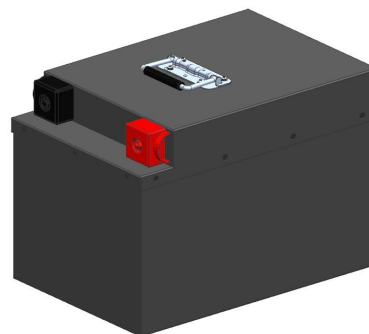
**Longer Cycle Life :** Offer up to 10 times longer cycle life and five times longer float/calendar life than lead acid battery, helping it minimize replacement cost and reduce total cost of ownership.

**Lighter Weight :** About 40% of the weight of a comparable lead acid battery. A 'drop in' replacement for lead acid batteries.

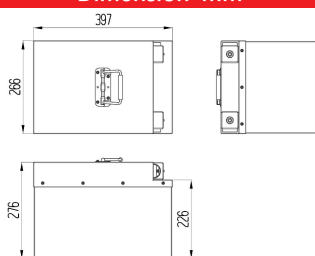
**Higher Power :** Delivers twice power of lead acid battery, even high discharge rate, while maintaining high energy capacity.

**Wider Temperature Range :** -20~60°C

**Superior Safety :** Lithium Iron Phosphate chemistry eliminates the risk of explosion or combustion due to high impact, overcharging or short circuit situation.



### Dimension-mm



### Application

- Cleaning vehicle
- Floor sweeping truck

### Specification

|                          |                           |                          |
|--------------------------|---------------------------|--------------------------|
| Basic Parameters         | Rated Voltage             | 25.6V                    |
|                          | Rated Capacity            | 200Ah                    |
|                          | Rated Energy              | 5120wh                   |
|                          | Combination Method        | 8S1P                     |
|                          | Cycle Life                | ≥3000 cycles @80%DOD     |
|                          | Self Discharge            | 1%/months                |
|                          | Efficiency of Charge      | ≥97%                     |
|                          | Efficiency of Discharge   | ≥98%                     |
| Charge                   | Charge Voltage            | 28.8V                    |
|                          | Charge Current (Recomm.)  | 40A                      |
|                          | Charge Current (Max.)     | 100A                     |
| Discharge                | Discharge Cut-off Voltage | 20.0V                    |
|                          | Discharge Current (Max.)  | 200A                     |
|                          | Pulse Current             | 250A (3S)                |
| Environmental            | Charge Temperature        | 0°C to 45°C              |
|                          | Discharge Temperature     | -20°C to 60°C            |
|                          | Humidity                  | 5% to 95%                |
| Physical Characteristics | IP Class                  | IP54                     |
|                          | Plastic Case              | Metal                    |
|                          | Dimensions ( in. /mm. )   | 397*266*276mm            |
|                          | Weight ( lbs. /kg. )      | 32kg                     |
|                          | Others( optional )        | Recharger,Electric meter |